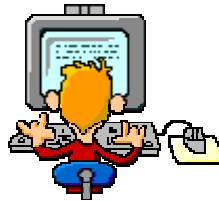


Attendance Information

Your child's ability to do well at school, both in the classroom and in the playground is all about how often they come to school.



If your child's attendance is above 97%, that is, if they miss no more than 2 days of school per term, then they will be 'STAR PERFORMERS' and they will have made good friends.



If your child's attendance is between 80 -90%, that is about 5 days away per term or 5/50 days, then they are having so much time away from school it will be difficult for them to keep up with lessons or work. Their friends will find others to play with and they will often feel lonely and not want to come to school.

Less than 80% attendance requires immediate action by parents. Your child will have missed so much schooling they will be unable to keep in touch with lessons, be very frustrated and run the risk of refusing to come to school.

**BE COOL COME TO SCHOOL
IT'S NOT OKAY TO BE AWAY**